

A GENERAL PLAN MEETS SMART GROWTH

**Transit Oriented Development, Millennials,
and Boomers...*oh my!***

#NPSGohmy!



WHERE WE ARE GOING

- **Discuss the setting**
- **Identify the Issues**
- **Getting to Best Practices**



INTRODUCTIONS

Sonja Ewing

Howard Ways

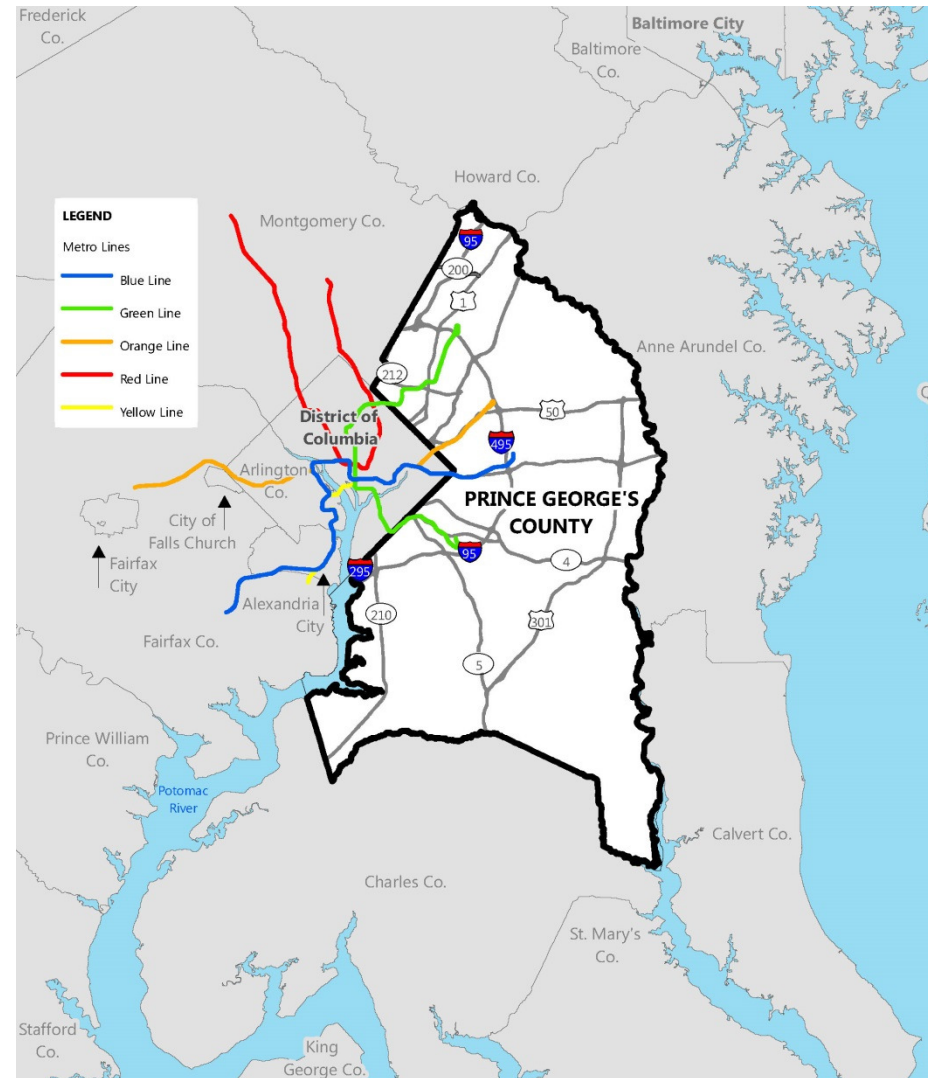
Aldea Douglas

Sarah Lewis



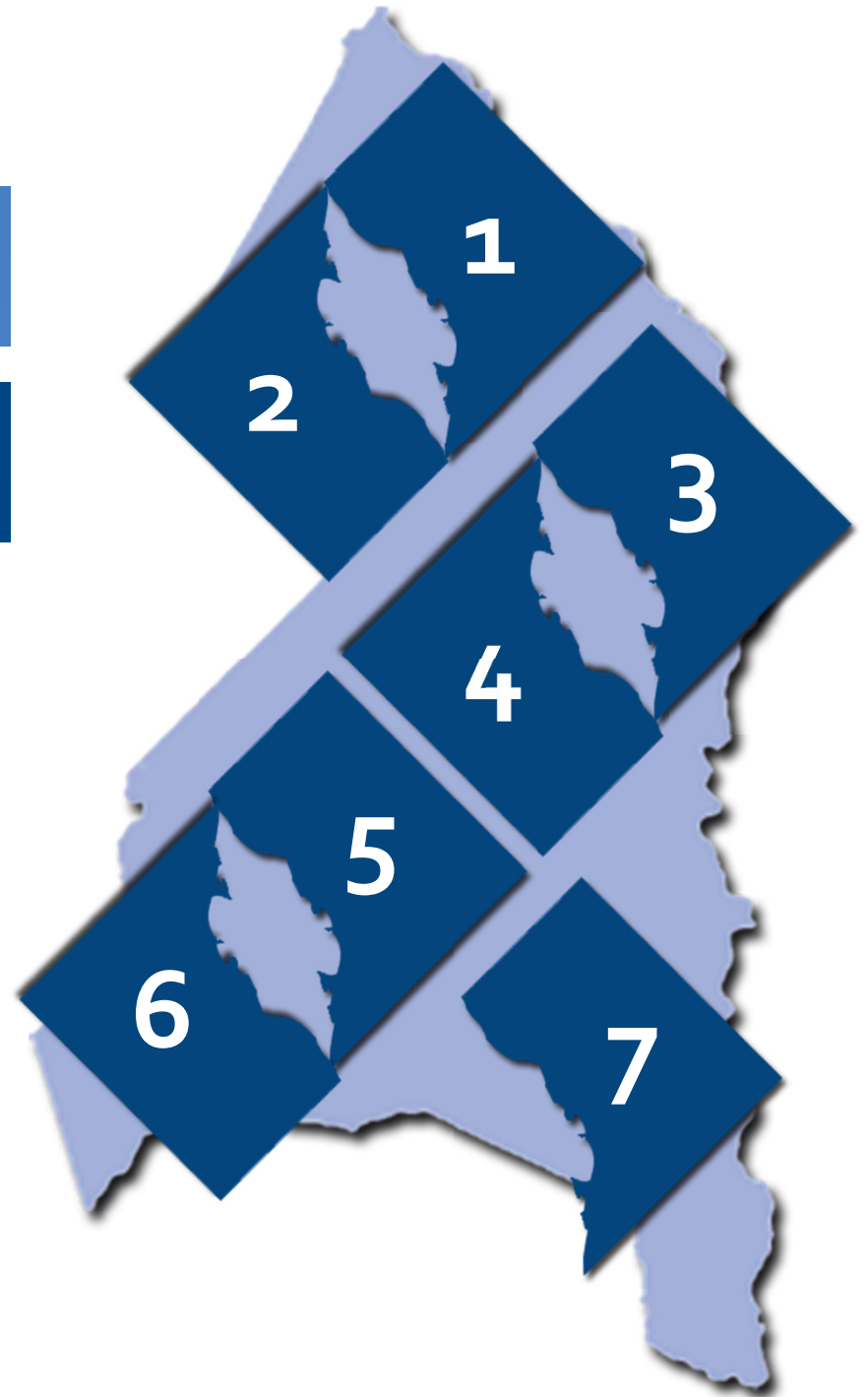
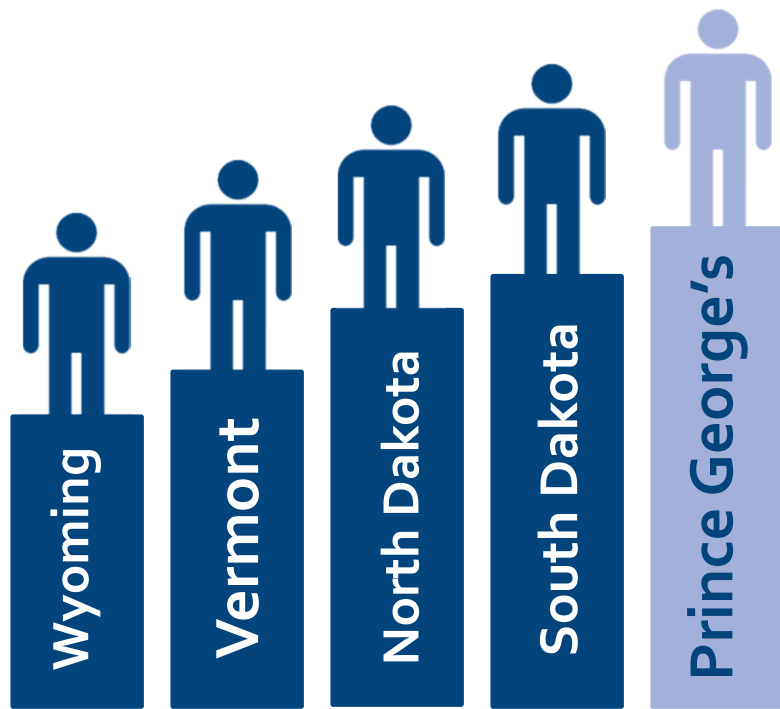
PRINCE GEORGE'S COUNTY *at a glance*

- **Washington Metro Region**
- **Households 304,000**
- **15 Metro rail Stations**
- **11 planned Purple Line Stations**
- **Universities/Community College**
- **Anacostia and Potomac Rivers**

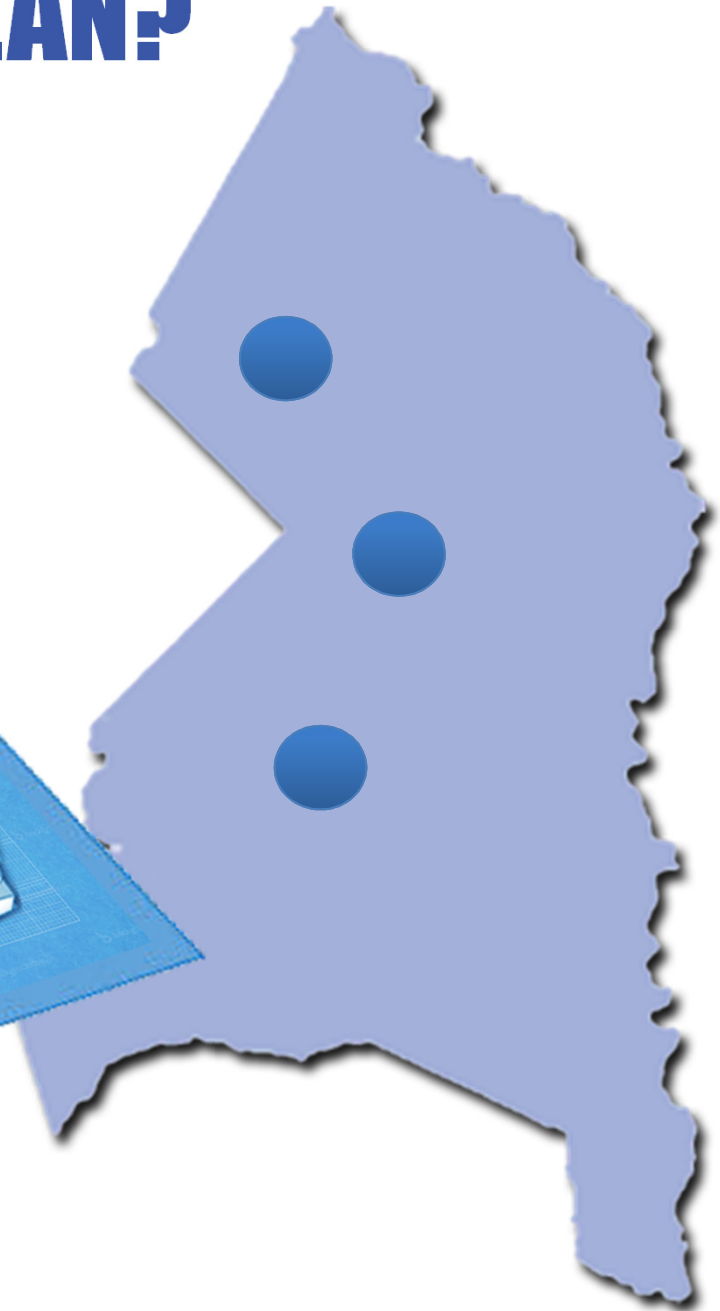
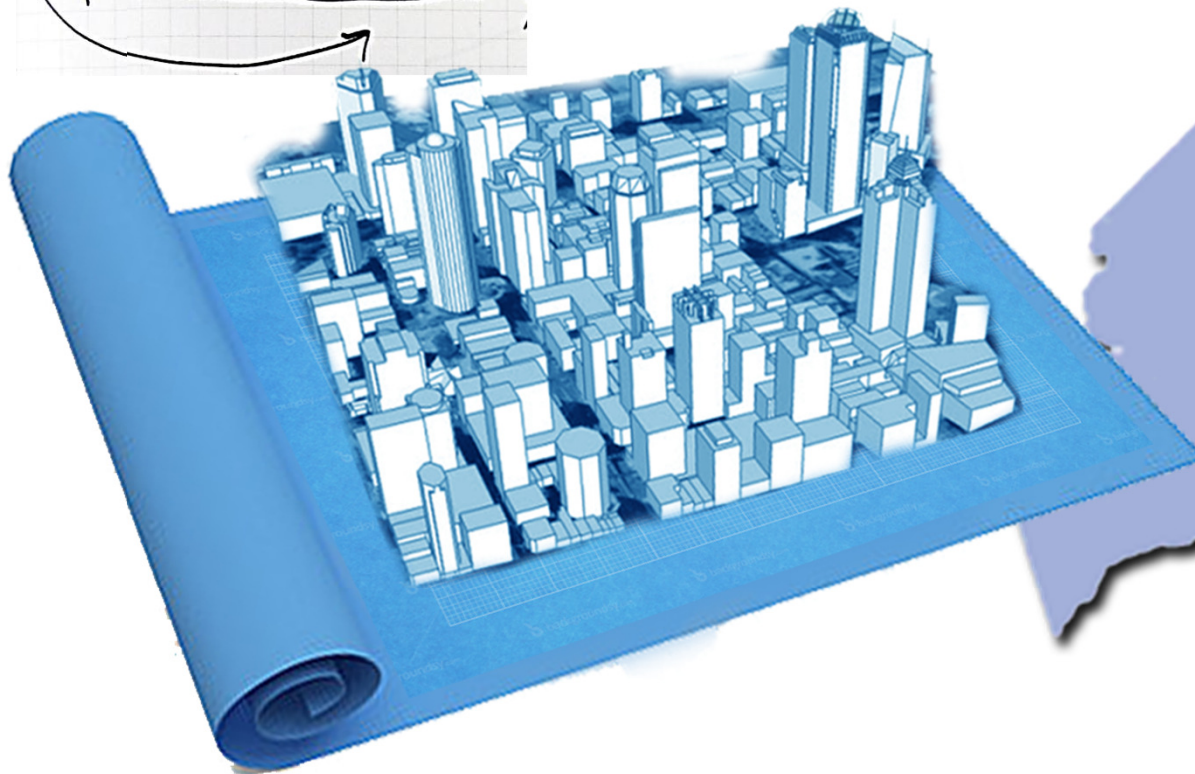


500 square miles

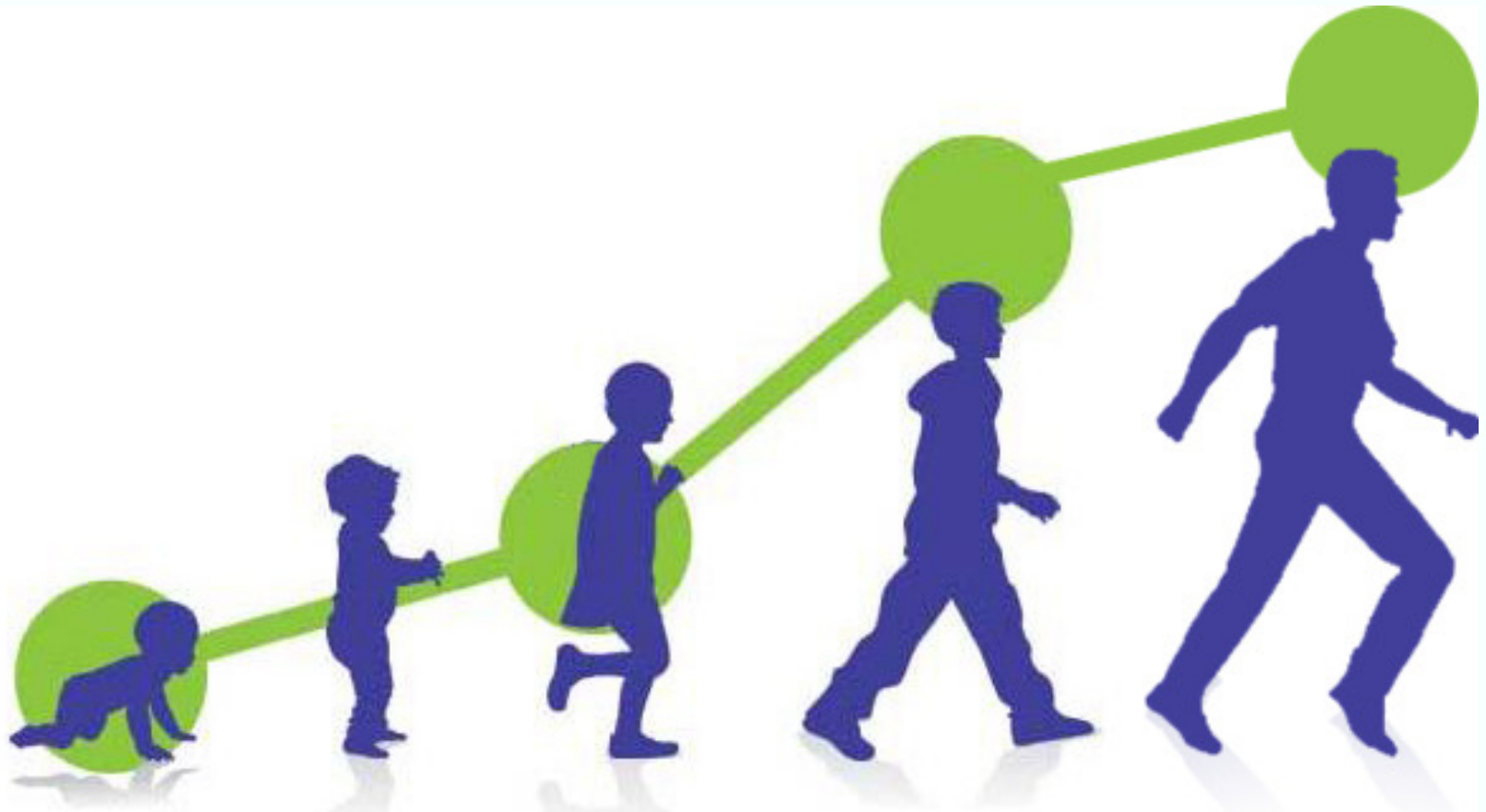
863,420 residents



WHAT IS A GENERAL PLAN?



PlanPGC 2035



How long is 22 years? 2013 to 2035

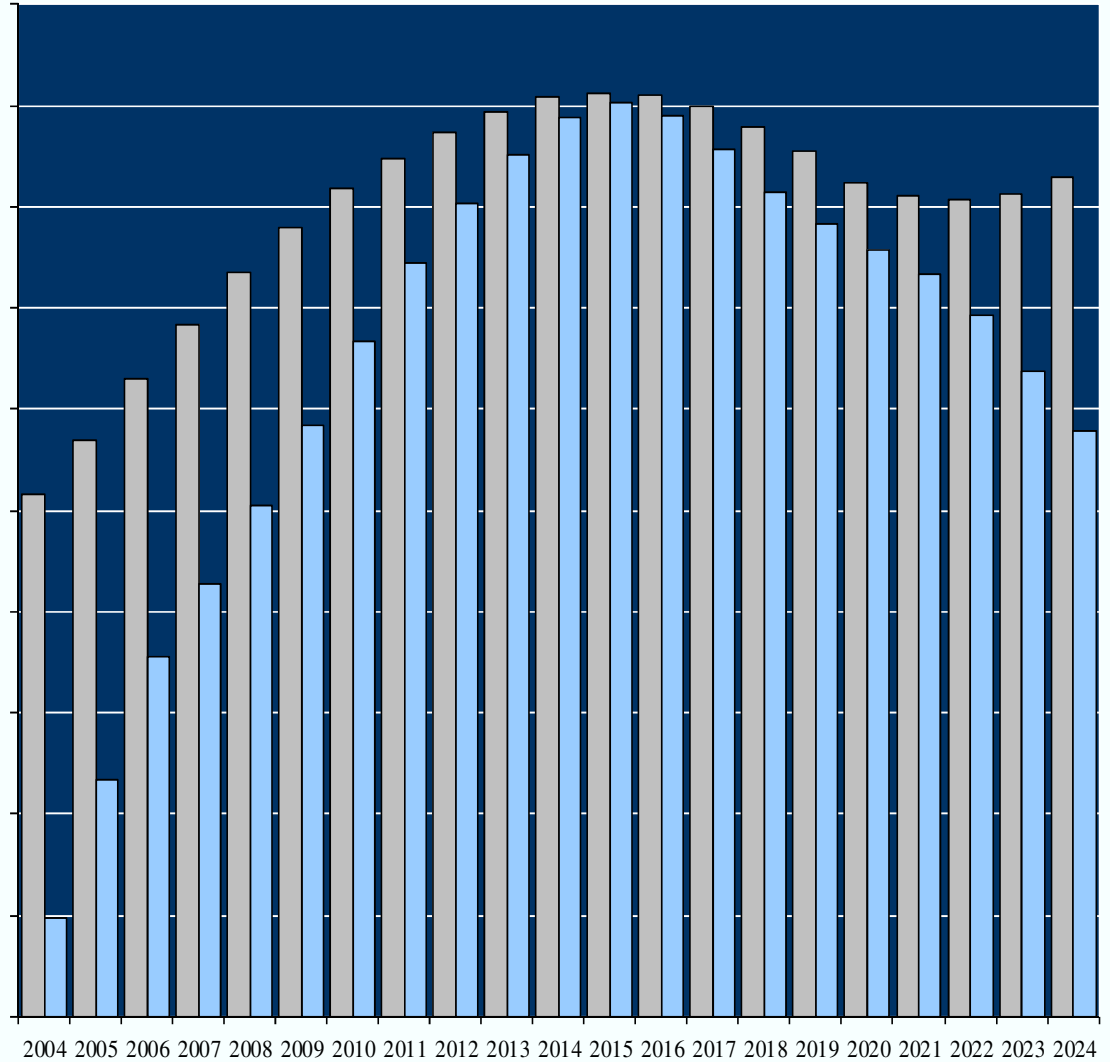


The Two Largest Generations in American History Converge:

Millions



■ 20 to 29
■ 50 to 59



You Are Who They Say You Are

HOWARD WAYS, AICP

EXECUTIVE DIRECTOR

REDEVELOPMENT AUTHORITY OF PRINCE GEORGE'S COUNTY



Prince George's By The Numbers

- **863,420** Residents
- **482.69** Square miles
- **301,700** Jobs in the county
- **14,250** Businesses
- **6.8%** Unemployment
- **\$70,019** Median household income
- **15** Metro stations
- **41.3 minutes** Average commute time
- **63%** Mortgages underwater
- **BMI > 30.0-40.0** Obesity rate
- **\$202,000** Median sales price of a home
- **0** Number of the top 50th wealthiest zip codes in region

